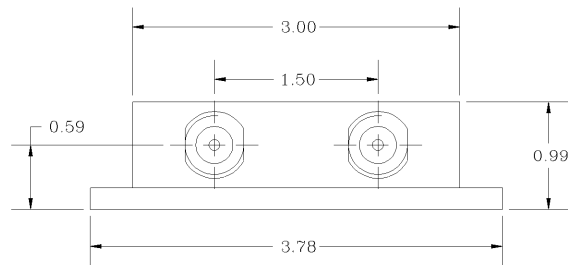
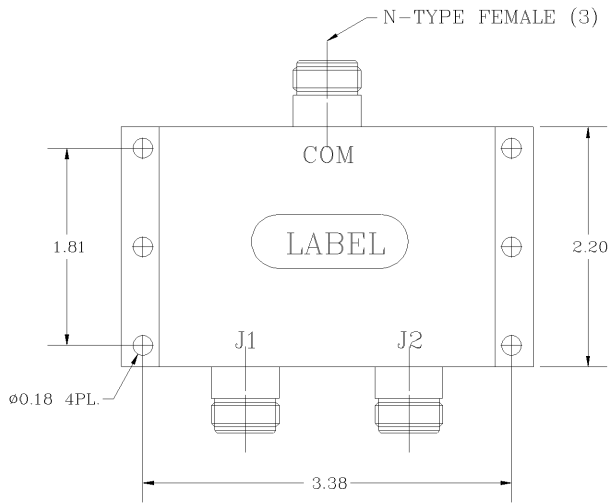


REVISIONS			
REV		DATE	APPROVED



Electrical Specifications

- *Frequency Range [MHz] : 700 - 2700
- *Insertion Loss above 3.0 dB [dB] : < 0.3, 0.25 (Typ.)
- *Amplitude Balance between Ports [dB] : 0.3 (Max.)
- *Phase Balance between Ports [degrees] : 2.0 (Max.)
- *Isolation between Ports [dB] : 20 (Min.)
- *Pass Band VSWR : < 1.25:1 (Typ.)
- *Input/Output Impedance : 50 ohm
- *RF Forward Power Capability CW : 30 Watts
- *Reverse Power Capability CW : 5 Watts

OPERATING TEMPERATURE RANGE: -30°C TO +55°C

PROPRIETARY DOCUMENT:
 THE CONTENTS OF THIS DOCUMENT WITH ALL INFORMATION AND PROCESSES ARE THE SOLE PROPERTY OF G-Way Microwave. THIS DOCUMENT MAY NOT BE DUPLICATED OR DISCLOSED TO ANY PARTY EXCEPT BY EXPRESSLY WRITTEN PERMISSION. THE ONLY AUTHORIZED USE OF THIS DOCUMENT BY A VENDOR IS FOR QUOTE PURPOSES AND SAID VENDOR AGREES NOT TO DISCLOSE ITS CONTENTS TO ANY THIRD PARTY. THIS DOCUMENT IS COPYRIGHTED 1998.

SKU # 98001041

NOTES:

1. BREAK ALL CORNERS & EDGES.005/.010.
2. FINAL FINISH:
 TEXTURED EPOXY BLACK - OPTIONAL.

DIMENSIONS ARE IN INCHES. TOLERANCES ARE:		CONTRACT NO:		G-Wave, Inc.				
ANGLES ± 1°	DECIMALS X ± .05 XX ± .01 XXX ± .003	APPROVALS	DATE					TITLE 2-Way Splitter/Combiner (700-2700 MHz)
TREATMENT	ENG.	DRAWN	Segal	09/10	MSI-LTE-B0421			
FINISH 63/	DESIGN ACTIVITY	SIZE	A	CAGE CODE	DWG NO:	REV.	0	
MATERIAL AL6061-76	TGP-B0221	SCALE	None		MSI-LTE-B0221-1	SHEET	1 OF 1	