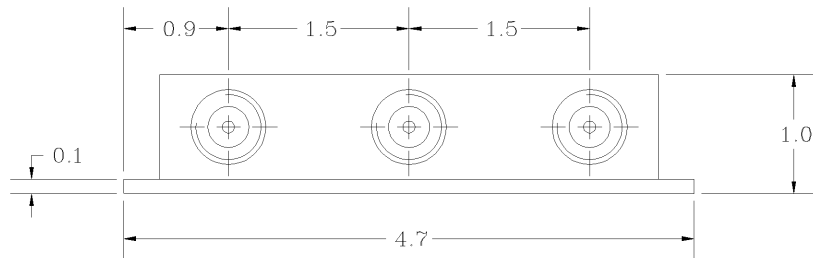
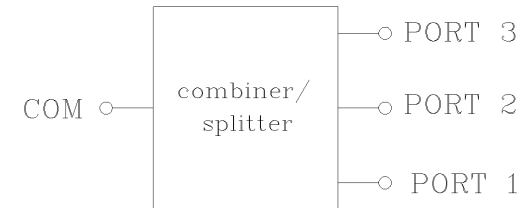
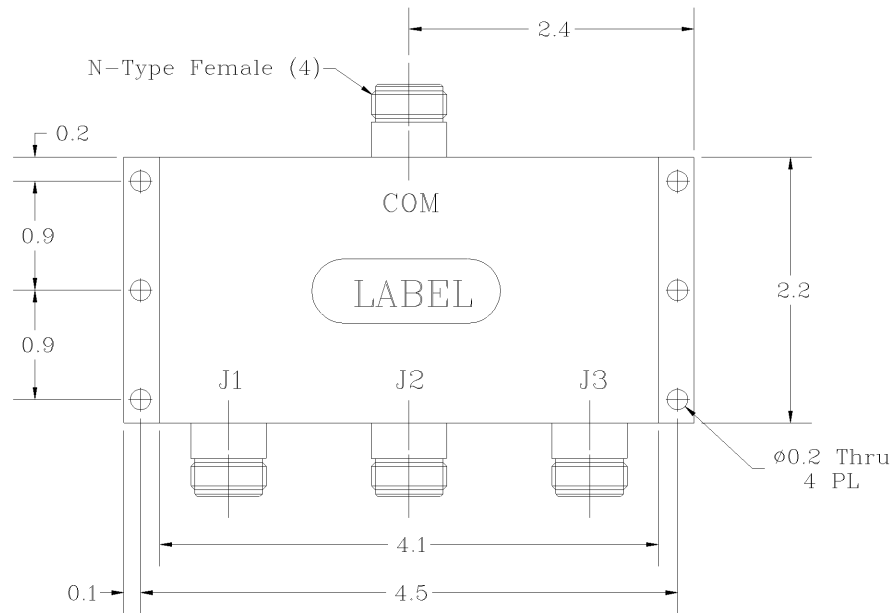


REVISIONS			
REV		DATE	APPROVED



Electrical Specifications

- *Frequency Range [MHz] : 700 - 2700
- *Insertion Loss above 4.7 dB [dB] : < 0.8, 0.6 (Typ.)
- *Amplitude Balance between Ports [dB] : 0.35 (Max.)
- *Phase Balance between Ports [degrees] : 3.0 (Max.)
- *Isolation between Ports [dB] : 20 (Typ.)
- *Pass Band VSWR : < 1.25:1 (Typ.)
- *Input/Output Impedance : 50 ohm
- *RF Forward Power Capability CW : 30 Watts
- *Reverse Power Capability CW : 5 Watts

OPERATING TEMPERATURE RANGE: -30°C TO +55°C

SKU # 98001042

PROPRIETARY DOCUMENT:
THE CONTENTS OF THIS DOCUMENT WITH ALL INFORMATION AND PROCESSES ARE THE SOLE PROPERTY OF G-Wave Microwave. THIS DOCUMENT MAY NOT BE DUPLICATED OR DISCLOSED TO ANY PARTY EXCEPT BY EXPRESSLY WRITTEN PERMISSION. THE ONLY AUTHORIZED USE OF THIS DOCUMENT BY A VENDOR IS FOR QUOTE PURPOSES AND SAID VENDOR AGREES NOT TO DISCLOSE ITS CONTENTS TO ANY THIRD PARTY. THIS DOCUMENT IS COPYRIGHTED 1998.

NOTES:

1. BREAK ALL CORNERS & EDGES .005 / .010.
2. FINAL FINISH:
TEXTURED EPOXY BLACK - OPTIONAL.

DIMENSIONS ARE IN INCHES: TOLERANCES ARE		CONTRACT NO:		G-Wave, Inc.					
ANGLES	DECIMALS	APPROVALS	DATE					TITLE 3-Way Splitter/Combiner (700-2700 MHz)	
± 1°	.X ± .05 .XX ± .01 .XXX ± .003	DRAWN Segal	09/10	MSI-LTE-B0321		SIZE	CAGE CODE	DWG NO:	REV.
TREATMENT	CHECKED			A		MSI-LTE-B0321-1		0	
FINISH 63/	ENG.			SCALE None				SHEET 1 OF 1	
MATERIAL AL6061-T6	TGP-B0421								