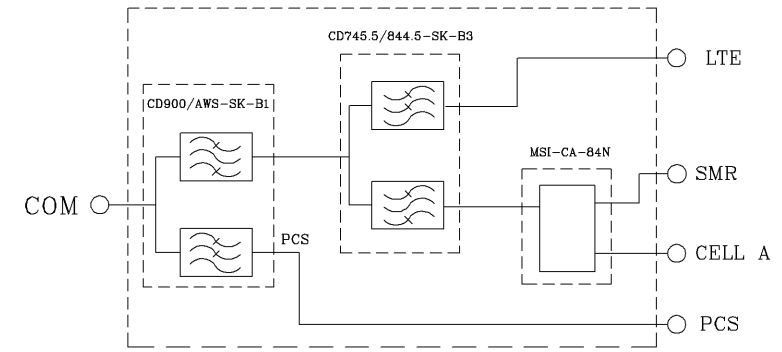
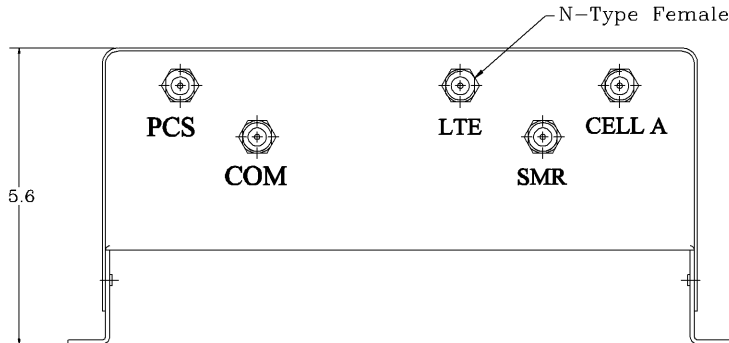
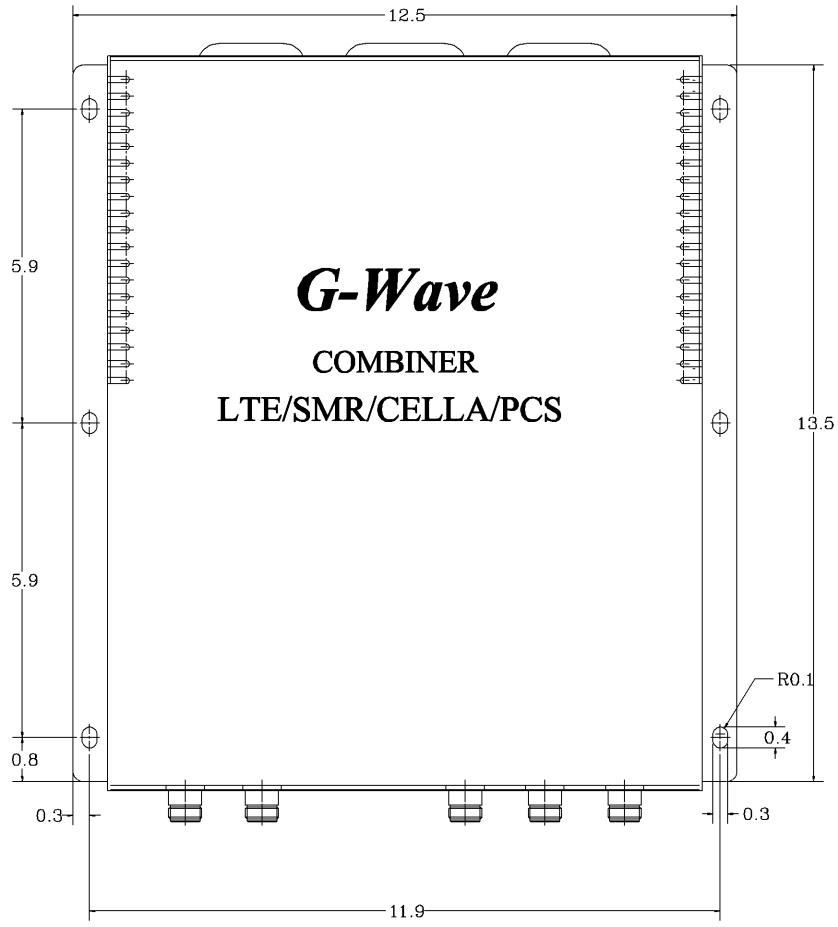


REVISIONS			
REV		DATE	APPROVED



### Electrical Specifications

- \*LTE UL Frequency Range [MHz] : 704-716  
: 777-787
- \*Passband Insertion Loss [dB] : 0.9 (Max.), 0.8 (Typ.)
- \*LTE DL Frequency Range [MHz] : 734-756
- \*Passband Insertion Loss [dB] : 0.8 (Max.), 0.7 (Typ.)
- \*SMR UL Frequency Range [MHz] : 809-816
- \*SMR DL Frequency Range [MHz] : 854-861
- \*Passband Insertion Loss [dB] : 4.1 (Max.), 4.0 (Typ.)
- \*CELL A UL Frequency Range [MHz] : 824-835
- \*CELL A DL Frequency Range [MHz] : 869-880
- \*Passband Insertion Loss [dB] : 4.0 (Max.), 3.8 (Typ.)
- \*CELL A DL Rejection @ 886 MHz [dBc] : 35 (Min.), 40 (Typ.)
- \*PCS UL Frequency Range [MHz] : 1850-1910
- \*PCS DL Frequency Range [MHz] : 1930-1990
- \*Passband Insertion Loss [dB] : 0.8 (Max.), 0.6 (Typ.)
- \*Passband Ripple [dB] : <0.5 P-T-P
- \*Isolation Between All Services [dB] : 40 (Min.), 50 (Typ.)
- \*Impedance [Ohm] : 50
- \*VSWR IN/OUT : 1.32:1 (Max.)
- \*Power Handling CW : 20 Watt
- \*FINISH - Textured Epoxy Blue
- \*Net Weight : 5.7 kg/12.6 lb

OPERATING TEMPERATURE RANGE: -20°C TO +50°C

PROPRIETARY DOCUMENT.  
THE CONTENTS OF THIS DOCUMENT WITH ALL INFORMATION AND PROCESSES ARE THE SOLE PROPERTY OF G-Way Microwave. THIS DOCUMENT MAY NOT BE DUPLICATED OR DISCLOSED TO ANY PARTY EXCEPT BY EXPRESSLY WRITTEN PERMISSION. THE ONLY AUTHORIZED USE OF THIS DOCUMENT BY A VENDOR IS FOR QUOTE PURPOSES AND SAID VENDOR AGREES NOT TO DISCLOSE ITS CONTENTS TO ANY THIRD PARTY. THIS DOCUMENT IS COPYRIGHTED 1998.

SKU # 98021181

DIMENSIONS ARE IN INCHES TOLERANCES ARE		CONTRACT NO:		<b>G-Wave, Inc.</b>			
ANGLES	DECIMALS	APPROVALS	DATE				
± 1"	X ± .05 .XX ± .01 .XXX ± .005	DRAWN Sivak	02/13	WMP-LTE/SMR/CELLA/PCS-SK-A2			
TREATMENT	CHECKED	ENG.		SIZE	CAGE CODE	DWG NO:	REV.
FINISH 63/		DESIGN ACTIVITY		A		WMP-LTE/SMR/CELLA/PCS-SK-A2-1	0
MATERIAL AL6061-T6				SCALE None			SHEET 1 OF 1