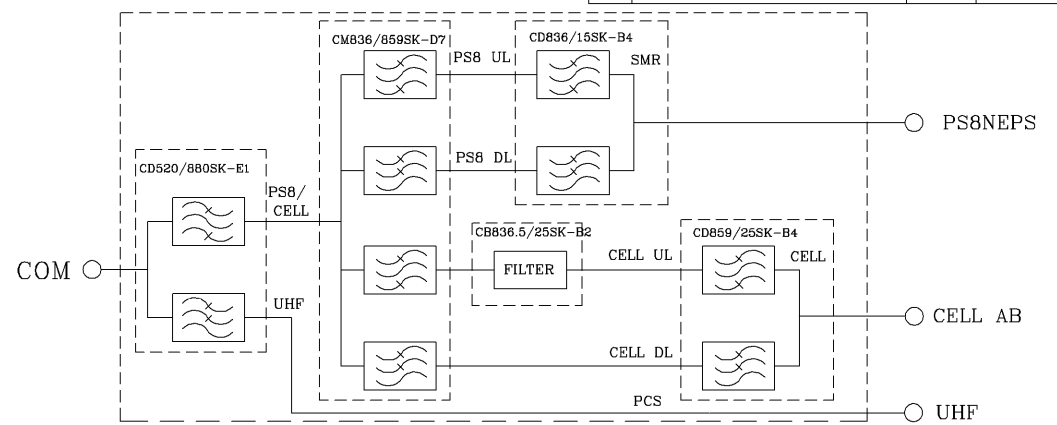
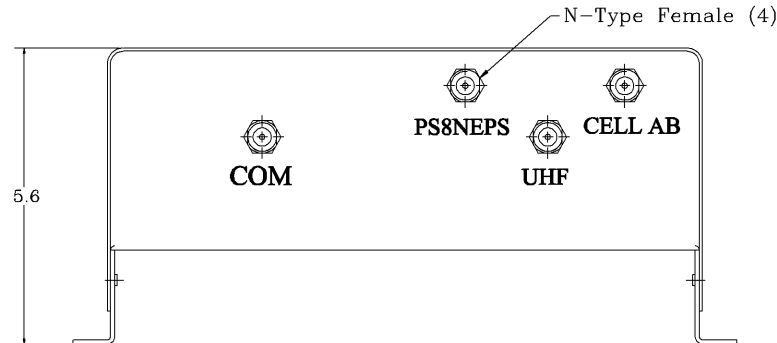
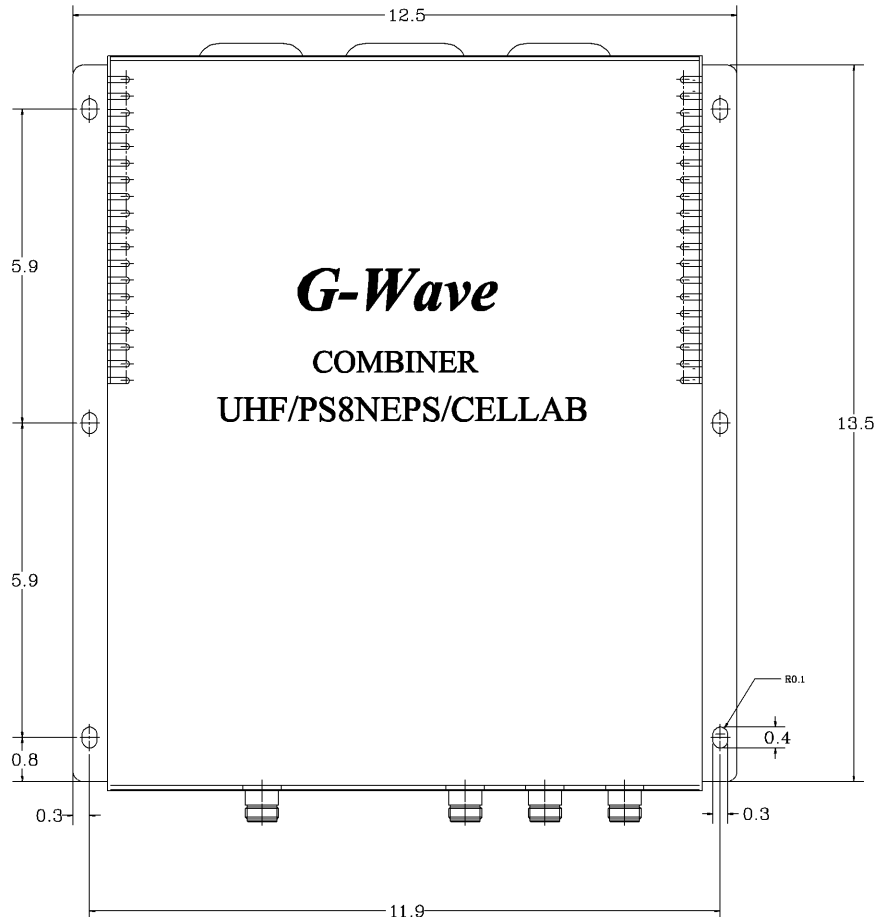


REVISIONS			
REV		DATE	APPROVED



Electrical Specifications

- *PS8NEPS UL Frequency Range [MHz] : 806-816
- *Passband Insertion Loss [dB] : 2.8 (Max.), 2.7 (Typ.)
- *PS8NEPS DL Frequency Range [MHz] : 851-861
- *Passband Insertion Loss [dB] : 3.8 (Max.), 3.3 (Typ.)
- *PS8NEPS DL Rejection @ 849 MHz [dBc] : 30 (Typ.)
- *CELL AB UL Frequency Range [MHz] : 824-849
- *Passband Insertion Loss [dB] : 4.0 (Max.), 3.8 (Typ.)
- *CELL AB UL Rejection @ 851 MHz [dBc] : 40 (Typ.)
- *CELL AB DL Frequency Range [MHz] : 869-894
- *Passband Insertion Loss [dB] : 2.8 (Max.), 2.6 (Typ.)
- *UHF Frequency Range [MHz] : 380-520
- *Passband Ripple [dB] : <0.5 P-T-P
- *Passband Insertion Loss [dB] : 0.8 (Max.), 0.6 (Typ.)
- *Passband Ripple [dB] : <0.5 P-T-P
- *Isolation Between All Filters [dB] : 35 (Min.), 50 (Typ.)
- *Impedance [Ohm] : 50
- *VSWR IN/OUT : 1.32:1 (Max.)
- *Power Handling CW : 20 Watt
- *FINISH - Textured Epoxy Blue
- *Net Weight : 5.7 kg/12.6 lb

OPERATING TEMPERATURE RANGE: -20°C TO +50°C

PROPRIETARY DOCUMENT:
THE CONTENTS OF THIS DOCUMENT WITH ALL INFORMATION AND PROCESSES ARE THE SOLE PROPERTY OF G-Way Microwave. THIS DOCUMENT MAY NOT BE DUPLICATED OR DISCLOSED TO ANY PARTY EXCEPT BY EXPRESSLY WRITTEN PERMISSION. THE ONLY AUTHORIZED USE OF THIS DOCUMENT BY A VENDOR IS FOR QUOTE PURPOSES AND SAID VENDOR AGREES NOT TO DISCLOSE ITS CONTENTS TO ANY THIRD PARTY. THIS DOCUMENT IS COPYRIGHTED 1998.

SKU # 98021058

DIMENSIONS ARE IN INCHES TOLERANCES ARE		CONTRACT NO:		G-Wave, Inc.					
ANGLES	DECIMALS	APPROVALS	DATE					TITLE Combiner UHF/PS8NEPS/CELLAB	
± 1"	X ± .05 .XX ± .01 .XXX ± .005	DRAWN Sivak	02/13	WMP-UHF/PS8NEPS/CELLAB-SK-A2		SIZE	CAGE CODE	DWG NO:	REV.
TREATMENT		CHECKED		A		WMP-UHF/PS8NEPS/CELLAB-SK-A2-1		0	
FINISH	63/	ENG.		SCALE None		SHEET 1 OF 1			
MATERIAL	AL6061-T6	DESIGN ACTIVITY							