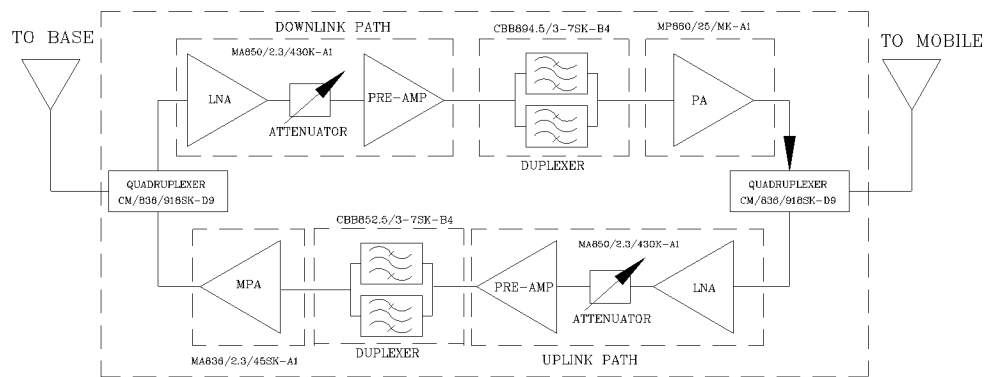
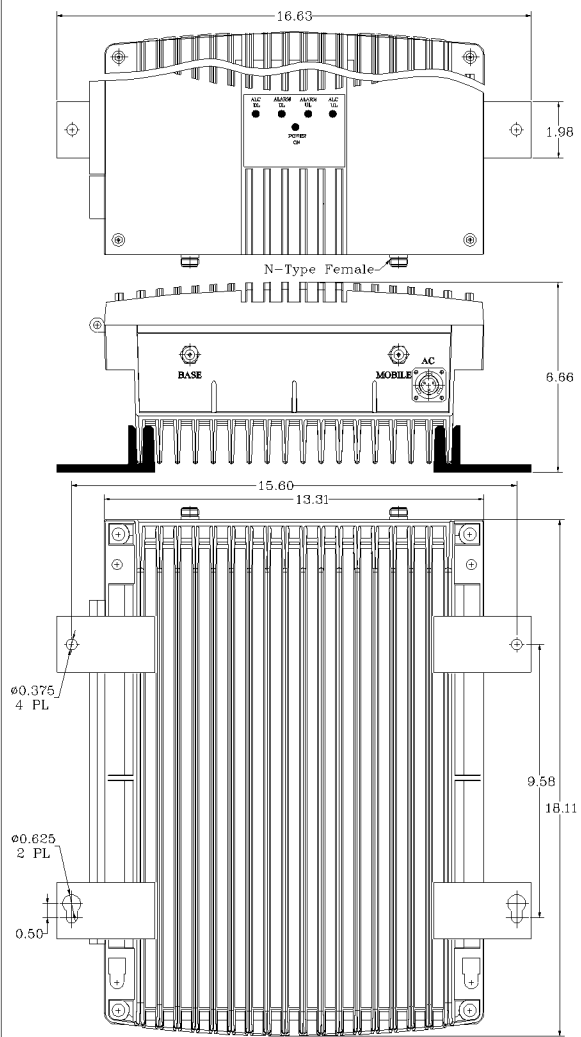


REVISIONS			
REV	DESCRIPTION	DATE	APPROVED
A	Linearity and power upgraded (PSB-25/33)	11/12	G. David

AVAILABLE OPTIONS	Description



### Electrical Specifications

- \*Down-Link (Base to Mobile) Frequency Range [MHz] : 851 - 854  
: 935 - 941
- \*Up-Link (Mobile to Base) Frequency Range [MHz] : 806 - 809  
: 896 - 902
- \*Gain (Minimum attenuation) [dB] : 80 (Min.), 85 (Typ.)
- \*Gain Flatness [dB] : +/- 1.5 (Typ.)
- \*Noise Figure (System) [dB] : 5.5 (Max.), 5.0 (Typ.)
- \*Manual Attenuation Range [dB] : 0 - 30 in 2-dB steps
- \*Output Power ALC Set [dBm] : Uplink : +27±1  
: Downlink : +37±1
- \*Output Composite Power [dBm] : Uplink : +27 (Typ.)  
: Downlink : +37 (Typ.)
- \*3rd Order Output Intercept Point [dBm] : Uplink : +48 (Typ.)  
@ 2 tones + 24 dBm each
- \*3rd Order Output Intercept Point [dBm] : Downlink : +58 (Typ.)  
@ 2 tones + 34 dBm each
- \*Power Supply : 110V/0.65A to 220V/0.33A (Autoranging) 50 to 60 Hz
- \*Propagation Delay [uSec] : <0.3
- \*Input/Output Impedance : 50 ohm
- \*VSWR IN/OUT : <1.5:1
- \*Net Weight : < 18 kg /40 lb
- \*PAINT: FLAT EPOXY BROWN

**WARNING.** This is NOT a CONSUMER device. It is designed for installation by FCC LICENSEES and QUALIFIED INSTALLERS. You MUST have an FCC LICENSE or express consent of an FCC Licensee to operate this device. Unauthorized use may result in significant forfeiture penalties, including penalties in excess of \$100,000 for each continuing violation.

*WITHOUT INCLUSION OF ACSP OPTION, THIS UNIT MAY NOT BE POWERED BY A GENERATOR.*

**SKU # 11602364**

**NEMA 4 ENCLOSURE**

**FCC ID: Q8KESMR2W80AN89R**

OPERATING TEMPERATURE RANGE: -30°C TO +55°C			
DIMENSIONS ARE IN INCHES. TOLERANCES ARE:		CONTRACT NO:	
ANGLES ± 1°	DECIMALS .XX ± .01 .XXX ± .003	APPROVALS	DATE
TREATMENT	FINISH 63 ✓	DRAWN Sivak	06/14
ENG. CHECKED	DESIGN ACTIVITY	TITLE <b>G-Wave Solutions</b>	
MATERIAL		SIZE A CAGE CODE DWG NO: BDA-NPSPAC/N/PS9-27/37-90-C	
		SCALE None	SHEET 1 OF 1