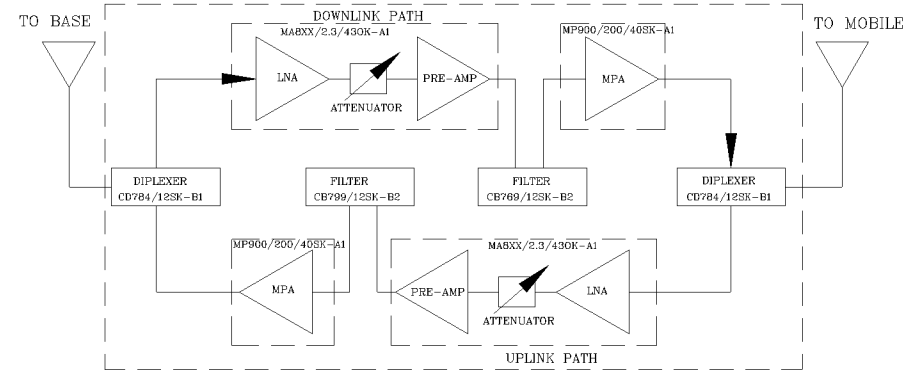


REVISIONS			
REV		DATE	APPROVED
A	Part Numbering System Changed	12/12	G. David

AVAILABLE OPTIONS	Description
O26	Standard NFPA Compliant Local Alarming via 26-Pin Connector
S1	External +24 to 26.5 VDC Back Up
RED	RED Enclosure
D	Cannon Type AC Connector (No AC/DC Proections)

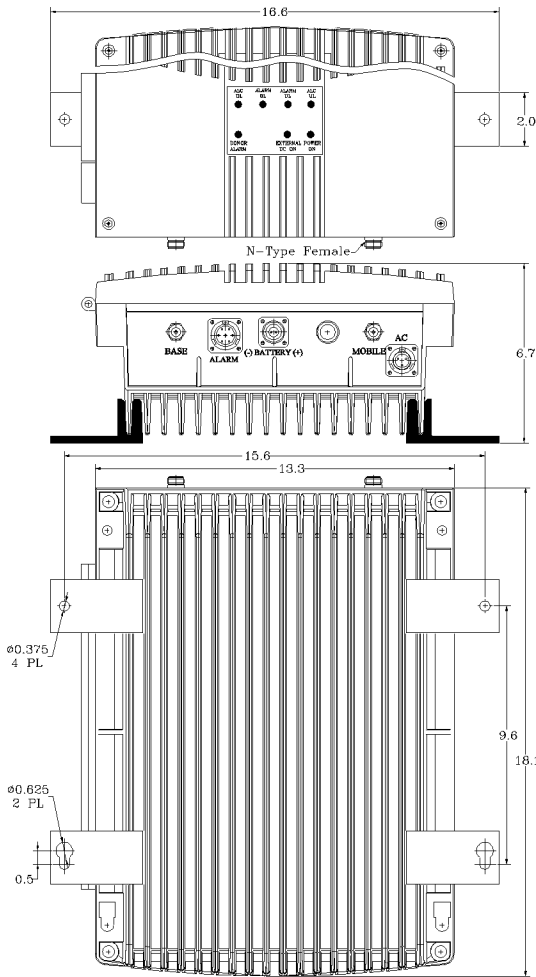


Electrical Specifications (Standard Unit)

- *Down-Link (Base to Mobile) Frequency Range [MHz] : 763-775
- *Up-Link (Mobile to Base) Frequency Range [MHz] : 793-805
- *Selectivity @ +/- 4 MHz from Passband [dBc] : 40 (Typ.)
- *Gain (Minimum attenuation) [dB] : 80 (Min.), 85 (Typ.)
- *Gain Flatness [dB] : +/- 1.5 (Max.)
- *Noise Figure [dB] : 5.0 (Max.), 4.5 (Typ.)
- *Manual Attenuation Range [dB] : 0-30 in 2-dB steps
- *Output Power ALC Set [dBm]
 - Uplink : +27±1
 - Downlink : +27±1
- *Output Composite Power [dBm]
 - Uplink : +27 (Typ.)
 - Downlink : +27 (Typ.)
 - Uplink : +48 (Typ.)
 - Downlink : +48 (Typ.)
- *3rd Order Output Intercept Point [dBm] @ 2 tones + 24 dBm each
- *3rd Order Output Intercept Point [dBm] @ 2 tones + 24 dBm each
- *Power Supply : 110V/0.41A to 220V/0.21A (Autoranging) 50 to 60 Hz
- *Propagation Delay [uSec] : <0.25
- *Input/Output Impedance : 50 ohm
- *VSWR IN/OUT : <1.5:1
- *Net Weight : < 16 kg/35 lb
- *PAINT: FLAT EPOXY BROWN

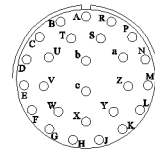
OPERATING TEMPERATURE RANGE: -20°C TO +50°C

DIMENSIONS ARE IN INCHES TOLERANCES ARE		CONTRACT NO:		G-Wave Solutions	
ANGLES	DECIMALS	APPROVALS	DATE	TITLE	
± 1°	.XX ± .05 .XX ± .001 .XXX ± .001	DRAWN Sivak	05/11	700 MHz PS BDA BDA-PS7-27/27-80-C	
TREATMENT	CHECKED			SIZE	CAGE CODE
FINISH	63	ENG.		DWG NO:	
MATERIAL		DESIGN ACTIVITY		BDA-PS7-27/27-80-C-1	
				SCALE	None
				SHEET 1 OF 1	

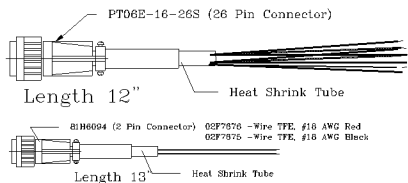


PIN #	DESCRIPTION
A	1-NO DL/UL Current Alarm
B	1-COM DL/UL Current Alarm
C	1-NC DL/UL Current Alarm
D	2-NO Donor Antenna Alarm
E	2-COM Donor Antenna Alarm
F	2-NC Donor Antenna Alarm
G	3-NO DC Backup Alarm
H	3-COM DC Backup Alarm
J	3-NC DC Backup Alarm
K	
L	
M	
N	GND
P	GND
R	+12 VDC 200mA
S	+12 VDC 200mA (STNB)

PIN OUT NFPA O26



WARNING. This is NOT a CONSUMER device. It is designed for installation by FCC LICENSEES and QUALIFIED INSTALLERS. You MUST have an FCC LICENSE or express consent of an FCC Licensee to operate this device. Unauthorized use may result in significant forfeiture penalties, including penalties in excess of \$100,000 for each continuing violation.



SKU # 11602166

NEMA 4 ENCLOSURE

DC Current Draw @ +24VDC: 1.52A

FCC ID Q8KPS7W3790C

WITHOUT INCLUSION OF ACSP OPTION, THIS UNIT MAY NOT BE POWERED BY A GENERATOR.