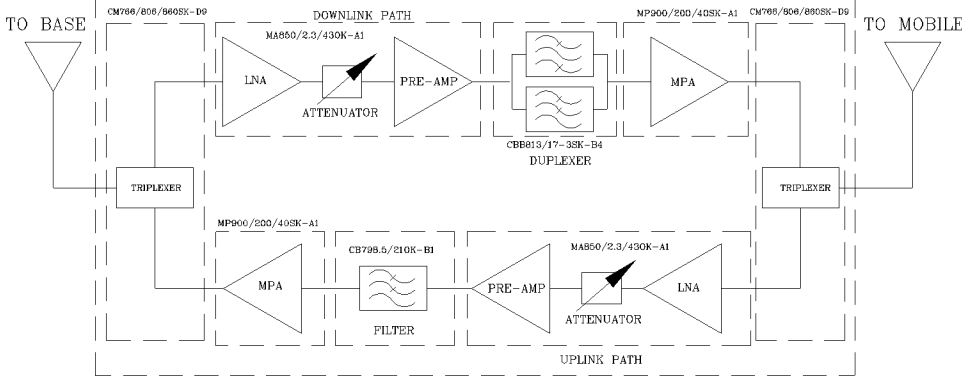
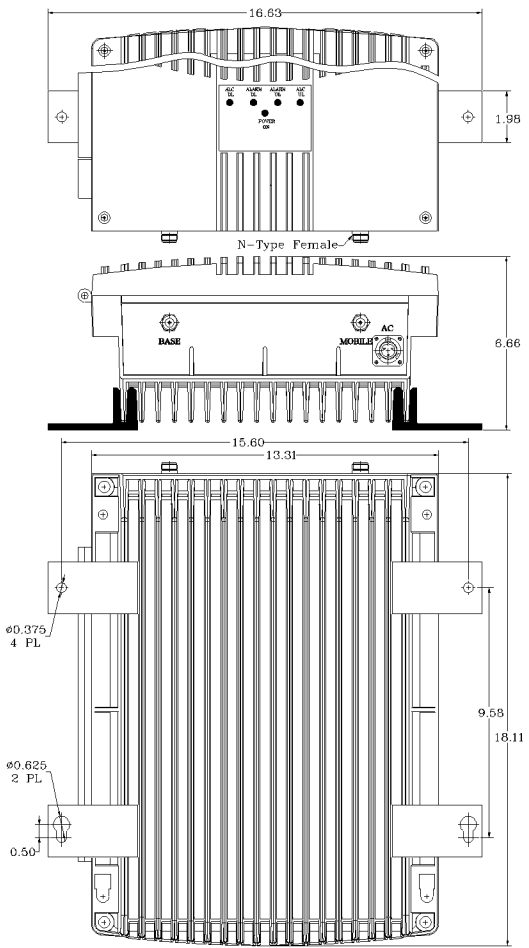


REVISIONS

REV		DATE	APPROVED
A	Linearity and power upgraded (PSB-25/33)	11/12	G. David

AVAILABLE OPTIONS	Description



Electrical Specifications

- *Down-Link (Base to Mobile) Frequency Range [MHz] : 758 - 775
: 851 - 854
- *Up-Link (Mobile to Base) Frequency Range [MHz] : 788 - 809
- *Gain (Minimum attenuation) [dB] : 80 (Min.), 85 (Typ.)
- *Gain Flatness [dB] : +/- 1.5 (Typ.)
- *Noise Figure (System) [dB] : 5.5 (Max.), 5.0 (Typ.)
- *Manual Attenuation Range [dB] : 0 - 30 in 2-dB steps
- *Output Power ALC Set [dBm]
Uplink : +25±1
Downlink : +33±1
- *Output Composite Power [dBm]
Uplink : +25 (Typ.)
Downlink : +33 (Typ.)
- *3rd Order Output Intercept Point [dBm]
@ 2 tones + 22 dBm each
Uplink : +45 (Typ.)
Downlink : +52 (Typ.)
- *3rd Order Output Intercept Point [dBm]
@ 2 tones + 30 dBm each
- *Power Supply : 110V/0.49A to 220V/0.24A (Autoranging) 50 to 60 Hz
- *Propagation Delay [uSec] : <0.3
- *Input/Output Impedance : 50 ohm
- *VSWR IN/OUT : <1.5:1
- *Net Weight : < 16 kg/ 35 lb
- *PAINT: FLAT EPOXY BROWN

WARNING. This is NOT a CONSUMER device. It is designed for installation by FCC LICENSEES and QUALIFIED INSTALLERS. You MUST have an FCC LICENSE or express consent of an FCC Licensee to operate this device. Unauthorized use may result in significant forfeiture penalties, including penalties in excess of \$100,000 for each continuing violation.

WITHOUT INCLUSION OF ACSP OPTION, THIS UNIT MAY NOT BE POWERED BY A GENERATOR.

SKU # 11602274

NEMA 4 ENCLOSURE

OPERATING TEMPERATURE RANGE: -30°C TO +55°C

DIMENSIONS ARE IN INCHES. TOLERANCES ARE: ANGLES DECIMALS ± 1" .X ± .05 .XX ± .01 .XXX ± .003	CONTRACT NO:		G-Wave Solutions		
	APPROVALS	DATE			TITLE
	DRAWN Sivak	11/15			BDA-PS7W/NPSPAC/N-25/33-80-C
	CHECKED				
TREATMENT	ENG.	SIZE	CAGE CODE	DWG NO:	REV.
FINISH	DESIGN ACTIVITY	A		BDA-PS7W/NPSPAC/N-25/33-80-C-1	A
MATERIAL		SCALE	None		SHEET 1 OF 1