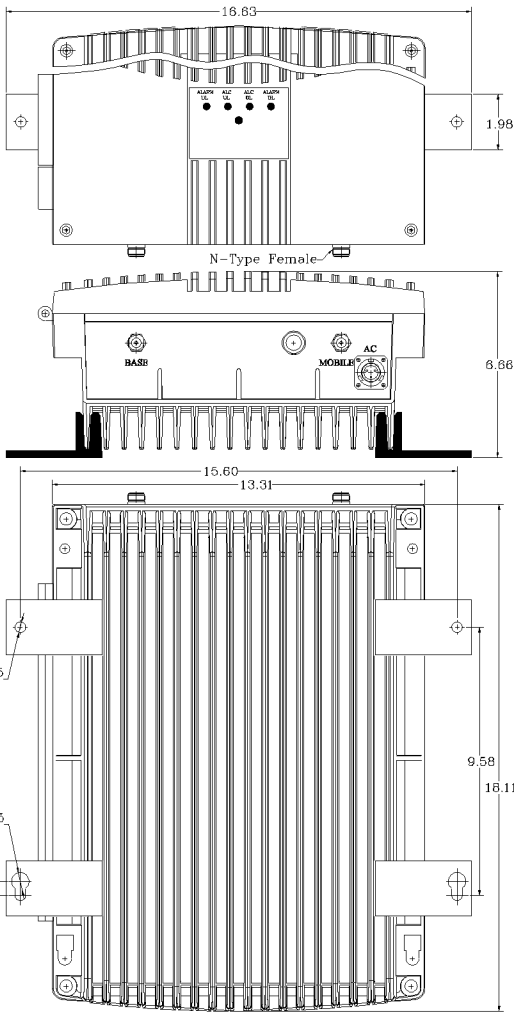
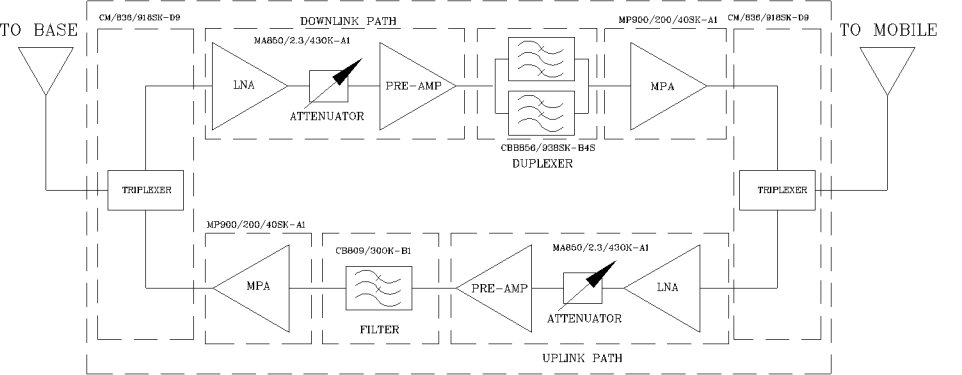


REVISIONS

REV	DESCRIPTION	DATE	APPROVED
A	Linearity and power upgraded (PSB-25/33)	11/12	G. David



AVAILABLE OPTIONS	Description



Electrical Specifications

- *Down-Link (Base to Mobile) Frequency Range [MHz] : 851 - 861
- : 935 - 941
- *Up-Link (Mobile to Base) Frequency Range [MHz] : 806 - 816
- : 896 - 902
- *Gain (Minimum attenuation) [dB] : 80 (Min.), 85 (Typ.)
- *Attenuation Downlink @ 862 to 869 MHz [dBc] : 30 (Typ.)
- *Gain Flatness [dB] : +/- 1.5 (Typ.)
- *Noise Figure (System) [dB] : 5.5 (Max.), 5.0 (Typ.)
- *Manual Attenuation Range [dB] : 0 - 30 in 2-dB steps
- *Output Power ALC Set [dBm]
 - Uplink : +27±1
 - Downlink : +30±1
- *Output Composite Power [dBm]
 - Uplink : +27 (Typ.)
 - Downlink : +30 (Typ.)
 - Uplink : +48 (Typ.)
- *3rd Order Output Intercept Point [dBm] @ 2 tones + 24 dBm each
 - Downlink : +50 (Typ.)
- *3rd Order Output Intercept Point [dBm] @ 2 tones + 27 dBm each
 -
- *Power Supply : 110V/0.47A to 220V/23A (Autoranging) 50 to 60 Hz
- *Propagation Delay [uSec] : <0.3
- *Input/Output Impedance : 50 ohm
- *VSWR IN/OUT : <1.5:1
- *Net Weight : < 18 kg/ 40 lb
- *PAINT: FLAT EPOXY BROWN

WITHOUT INCLUSION OF ACSP OPTION, THIS UNIT MAY NOT BE POWERED BY A GENERATOR.

WARNING. This is NOT a CONSUMER device. It is designed for installation by FCC LICENSEES and QUALIFIED INSTALLERS. You MUST have an FCC LICENSE or express consent of an FCC Licensee to operate this device. Unauthorized use may result in significant forfeiture penalties, including penalties in excess of \$100,000 for each continuing violation.

SKU # 11602246

NEMA 4 ENCLOSURE

FCC ID: Q8KESMR2W80AN89R

OPERATING TEMPERATURE RANGE: -30°C TO +55°C

DIMENSIONS ARE IN INCHES TOLERANCES ARE:			CONTRACT NO:		G-Wave Solutions			
ANGLES	DECIMALS	± 1"	APPROVALS	DATE	TITLE 800/900 MHz BDA			
X ± .05	.XX ± .01	.XXX ± .005	DRAWN Sivak	06/14	BDA-PS8NEPS/N/PS9-27/30-80-C			
TREATMENT	FINISH	MATERIAL	CHECKED	ENG.	SIZE	CAGE CODE	DWG NO:	REV.
	63 ✓		DESIGN ACTIVITY		A		BDA-PS8NEPS/N/PS9-27/30-80-C-1	A
SCALE None							SHEET 1 OF 1	