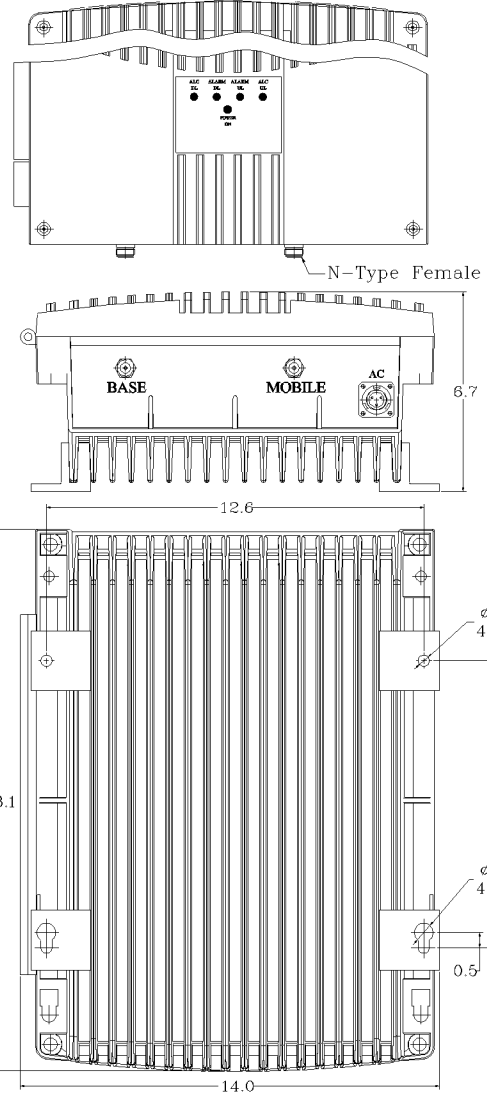
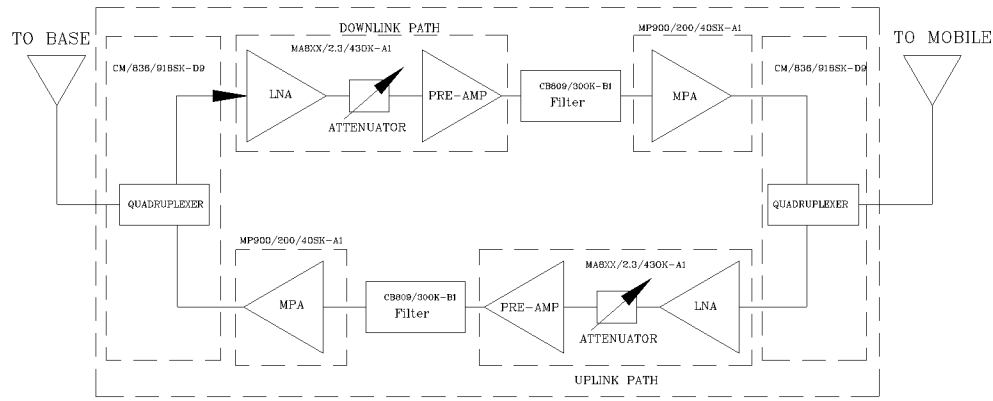


REVISIONS			
REV	DESCRIPTION	DATE	APPROVED
A	Linearity and power upgraded (PSB-25/33)	11/12	G. David



AVAILABLE OPTIONS	Description



### Electrical Specifications

- \*Down-Link (Base to Mobile) Frequency Range [MHz] : 851 - 861  
: 935 - 941
- \*Up-Link (Mobile to Base) Frequency Range [MHz] : 806 - 816  
: 896 - 902
- \*Gain (Minimum attenuation) [dB] : 80 (Min.), 85 (Typ.)
- \*Gain Flatness [dB] : +/- 1.5 (Typ.)
- \*Noise Figure (System) [dB] : 5.5 (Max.), 5.0 (Typ.)
- \*Manual Attenuation Range [dB] : 0 - 30 in 2-dB steps
- \*Output Power ALC Set [dBm]  
Uplink : +27±1  
Downlink : +30±1
- \*Output Composite Power [dBm]  
Uplink : +27 (Typ.)  
Downlink : +30 (Typ.)
- \*3rd Order Output Intercept Point [dBm]  
@ 2 tones + 24 dBm each  
Uplink : +48 (Typ.)  
Downlink : +50 (Typ.)
- \*3rd Order Output Intercept Point [dBm]  
@ 2 tones + 27 dBm each
- \*Power Supply : 110V/0.47A to 220V/23A (Autorangeing) 50 to 60 Hz
- \*Propagation Delay [uSec] : <0.3
- \*Input/Output Impedance : 50 ohm
- \*VSWR IN/OUT : <1.5:1
- \*Net Weight : < 18 kg/ 40 lb
- \*PAINT: FLAT EPOXY BROWN

**WARNING. This is NOT a CONSUMER device. It is designed for installation by FCC LICENSEES and QUALIFIED INSTALLERS. You MUST have an FCC LICENSE or express consent of an FCC Licensee to operate this device. Unauthorized use may result in significant forfeiture penalties, including penalties in excess of \$100,000 for each continuing violation.**

*WITHOUT INCLUSION OF ACSP OPTION, THIS UNIT MAY NOT BE POWERED BY A GENERATOR.*

**SKU # 11602245**

**NEMA 4 ENCLOSURE**

OPERATING TEMPERATURE RANGE: -30°C TO +55°C

DIMENSIONS ARE IN INCHES. TOLERANCES ARE: ANGLES    DECIMALS ± 1"        .XX ± .05 .XXX ± .001		CONTRACT NO:		<b>G-Wave Solutions</b>	
		APPROVALS    DATE			
TREATMENT		DRAWN Sivak 06/14		TITLE 800/900 MHz BDA	
FINISH <input checked="" type="checkbox"/>		CHECKED		BDA-PS8NEPS/PS9-27/30-80-C	
MATERIAL		ENG. DESIGN ACTIVITY		SIZE CAGE CODE DWG NO:	
				A      BDA-PS8NEPS/PS9-27/30-80-C-1      A	
				SCALE None      SHEET 1 OF 1	

FCC ID: Q8KESMR2W80AN89R