

WARNING. This is NOT a CONSUMER device. It is designed for installation by FCC LICENSEES and QUALIFIED INSTALLERS. You MUST have an FCC LICENSE or express consent of an FCC Licensee to operate this device. Unauthorized use may result in significant forfeiture penalties, including penalties in excess of \$100,000 for each continuing violation.

WITHOUT INCLUSION OF ACSP OPTION, THIS UNIT MAY NOT BE POWERED BY A GENERATOR.

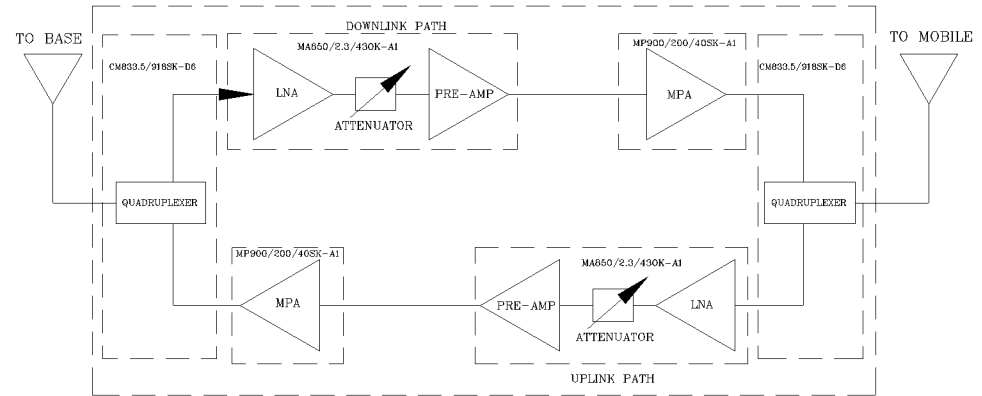
SKU # 11602302

AVAILABLE OPTIONS	Description

NEMA 4 ENCLOSURE

FCC ID: Q8KESMR2W80AN89R

REVISIONS			
REV	DESCRIPTION	DATE	APPROVED
A	Linearity and power upgraded (PSB-25/33)	11/12	G. David



Electrical Specifications

- *Down-Link (Base to Mobile) Frequency Range [MHz] : 851 - 861 / 935 - 941
- *Up-Link (Mobile to Base) Frequency Range [MHz] : 806 - 816 / 896 - 902
- *Selectivity @ +/- 4 MHz from Passband [dBc] : 40 (Typ.)
- *Gain (Minimum attenuation) [dB] : 80 (Min.), 85 (Typ.)
- *Gain Flatness [dB] : +/- 1.5 (Typ.)
- *Noise Figure (System) [dB] : 5.0 (Max.), 4.5 (Typ.)
- *Manual Attenuation Range [dB] : 0 - 30 in 2-dB steps
- *Output Power ALC Set [dBm] : Uplink : +27±1
Downlink : +33±1
- *Output Composite Power [dBm] : Uplink : +27 (Typ.)
Downlink : +33 (Typ.)
- *3rd Order Output Intercept Point [dBm] @ 2 tones + 24 dBm each : Uplink : +48 (Typ.)
- *3rd Order Output Intercept Point [dBm] @ 2 tones + 30 dBm each : Downlink : +52 (Typ.)
- *Power Supply : 110V/0.51A to 220V/26A (Autoranging) 50 to 60 Hz
- *Propagation Delay [uSec] : <0.3
- *Input/Output Impedance : 50 ohm
- *VSWR IN/OUT : <1.5:1
- *Net Weight : < 16 kg/35 lb
- *PAINT: FLAT EPOXY BROWN

OPERATING TEMPERATURE RANGE: -30°C TO +55°C

DIMENSIONS ARE IN INCHES TOLERANCES ARE:		CONTRACT NO:		G-Wave Solutions	
ANGLES ± 1°	DECIMALS X ± .05 XX ± .01 XXX ± .003	APPROVALS	DATE		
TREATMENT		DRAWN Sivak	11/12	BDA-PS8NEPS/PS9-27/33-80-C	
FINISH	63	CHECKED		SIZE	CAGE CODE
MATERIAL		ENG. DESIGN ACTIVITY		A	DWG NO: BDA-PS8NEPS/PS9-27/33-80-C-1
				SCALE	None
				SHEET	1 OF 1