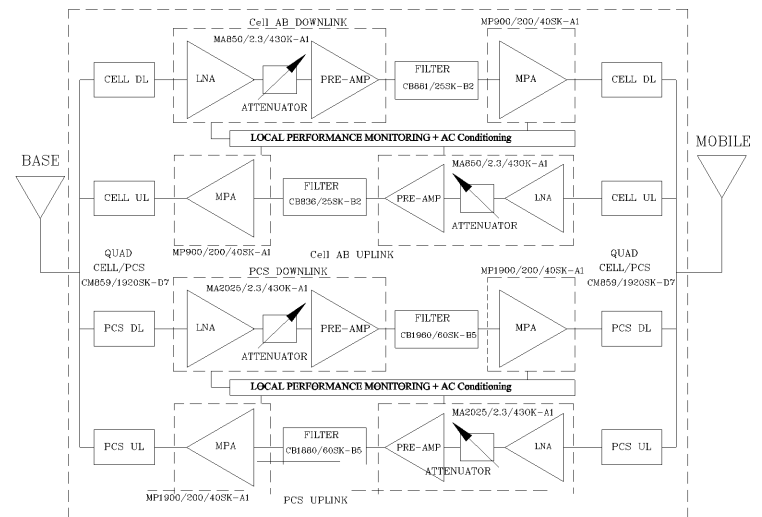


**WARNING.** This is NOT a CONSUMER device. It is designed for installation by FCC LICENSEES and QUALIFIED INSTALLERS. You MUST have an FCC LICENSE or express consent of an FCC Licensee to operate this device. Unauthorized use may result in significant forfeiture penalties, including penalties in excess of \$100,000 for each continuing violation.

*WITHOUT INCLUSION OF ACSP OPTION, THIS UNIT MAY NOT BE POWERED BY A GENERATOR.*

**SKU # 42301569**

INCLUDED OPTIONS	Description
O	Environmentally sealed.
ODD	Oscillation Detect & Display
D	Cannon type Circular AC Connector (No AC/DC Protections)
LATCH	DOOR Latch
ACSP	AC Surge protection and DC Line conditioning
VA	Local Visual Alarms



## Electrical Specifications

- \*Down-Link Cell AB Frequency Range [MHz] : 869 - 894
- \*Down-Link PCS1900 Frequency Range [MHz] : 1930 - 1990
- \*Up-Link Cell AB Frequency Range [MHz] : 824 - 849
- \*Up-Link PCS1900 Frequency Range [MHz] : 1850 - 1910
- \*Gain (Minimum attenuation) [dB] : 80 (Min.)
- \*Gain Flatness [dB] : +/- 1.5 (Max.)
- \*Noise Figure @ Maximum Gain [dB] : 5.0 (Max.), 4.5 (Typ.)
- \*Manual Gain Adjustment Range [dB] : 0 to 30 in 2dB steps
- \*Output Power ALC Set [dBm] : Uplink : +27 ±1  
Downlink : +27 ±1
- \*Output Composite Power [dBm] : Uplink : +27 (Typ.)  
Downlink : +27 (Typ.)
- \*3rd Order Output Intercept Point [dBm] @ 2 tones + 24 dBm each : Uplink : +48 (Typ.)  
Downlink : +48 (Typ.)
- \*3rd Order Output Intercept Point [dBm] @ 2 tones + 24 dBm each : Downlink : +48 (Typ.)
- \*Maximum Input Signal Level [dBm] : -30 (Max.)
- \*Power Supply : 110V/0.83A to 220V/.41A (Autoranging) 50 to 60 Hz
- \*Propagation Delay [uSec] : < 0.35
- \*Input/Output Impedance : 50 ohm
- \*VSWR IN/OUT : < 1.5:1
- \*Net Weight (Estimated) : < 28.5 kg/63 lb
- \*PAINT: FLAT EPOXY GRAY

OPERATING TEMPERATURE RANGE: -35°C TO +65°C

## NEMA 4 ENCLOSURE

DIMENSIONS ARE IN INCHES; TOLERANCES ARE:		CONTRACT NO:		<h3>G-Wave Solutions</h3>	
ANGLES ± 1°	DECIMALS X ± .05 XX ± .01 XXX ± .003	APPROVALS	DATE		
TREATMENT		DRAWN Sivak	10/16	Dual Band CellAB/PCS Full Band	
FINISH 63		CHECKED		BDA-CELLAB/PCSF-27/27-80-OCMG (IC)	
MATERIAL		ENG.		SIZE A	CAGE CODE DWG NO. 0
		DESIGN ACTIVITY		BDA-CELLAB/PCSF-27/27-80-OCMG-1	
				SCALE None	SHEET 1 OF 1

IC: 4901A-CELLPCS3380N